

Dear Golfer,

**AS STATED ON THE WEBSITE – At this time (while NC is under EO) we can only accept VERY SERIOUS INQUIRIES for this product.**

Thank you for your interest in Pro Putt Systems and our custom outdoor DIY putting green kits.

<https://proputtssystem.com/do-it-yourself-putting-greens/>

Pricing will depend on the length and width of your design and of course the complexity of the fabrication process. For most of our custom DIY putting green kits that we build in our custom shop in Charlotte, NC and ship to you for a simple DIY install.

**Generally, you are looking at approximately \$16 to \$19 per sq/ft plus freight shipping.**

**To arrive at your square footage, multiply the LONGEST WIDTH X the LONGEST LENGTH to arrive at the total footprint and multiply by the ranges above.**

Larger greens with symmetrical shapes will run on the lower end of that range as there is an economy of scale.

Smaller greens with complex cuts and non-symmetrical shapes such as L-Shapes and oblong shapes will run on the higher end.

This product is designed for the DIY'er who is relatively handy and or has friends who are handy.

We also fit incredibly well for these smaller greens where your local turf installer most likely won't mobilize a crew for greens under \$4,000.

**Many of our customers want the benefits of the base panel technology which include, turf longevity, smoother roll, chipping realism, the ability to move the green in the future and simplicity of sub-base installation.**

Occasionally we will run a Flat Rate shipping promotion and this will be reflected on your quote.

Please note, we also offer financing and in the event, you pre-qualify for financing our Lending Partner Cross River Bank can offer rates as low as 0% APR\* and interest bearing loans with terms up to 24 months\*\*.

To be pre-qualified, simply click a Box that Says: CHECK MY RATE anywhere on the website and you can fill in 6 pieces of info to get a pre-approval. It only takes seconds to get an answer and checking will NOT affect your credit score.

**AS STATED ON THE WEBSITE – At this time (while NC is under EO) we can only accept VERY SERIOUS INQUIRIES for this product.**

In order to set up a call with our custom design team we will need a sketch of your design with complete measurements of all sides. Once we have that information, we will set up a call with our design team to discuss your plans and then provide a quote for your project.

**\* Attached is more info on prepping the base and what to expect from an install standpoint. I have also attached a "SAMPLE QUOTE" and a couple sheets of Graph Paper to assist you with your drawing and measurements.**

I look forward to working with you on building your very own custom putting green!

Thank you,

Brian Barry, PGA

Director of Sales  
Pro Putt Systems, LLC

**To follow:**

Sample Quote – view entire document

Design Sheets – choose the size that fits your need best and sketch out your desired green IN SCALE.

Text Version of Install Guidance

When Your Sketch is Done PLEASE – Fill out a contact form on the website at [www.ProPuttSystems.com](http://www.ProPuttSystems.com) and once you do, you will get an automated response.

Please reply to that automated response with your pre-filled design sheet to scale as well as any other notes or questions you may have.

**Following these instructions will help you, by not having to pay an advance design charge of \$199 – refundable ONLY when you purchase.**



## Professional Grade Panelized Putting Greens

### Custom Backyard DIY Putting Green Quote

Customer: **Tiger Woods**

**Simple Shape  
Example**

#### Example 1

Custom Price:

**\$4,824**

Stimp:

10.8

Flat Rate Shipping Promo:

**\$299.00**

Turf Warranty:

10 yr

Total:

**\$5,123**

Square Feet:

322 sq ft +/-

Cups and Pins:

**5**

Included

Chipping Station:

Optional

Seamless Putting Turf:

Yes

RoboCup:

Optional

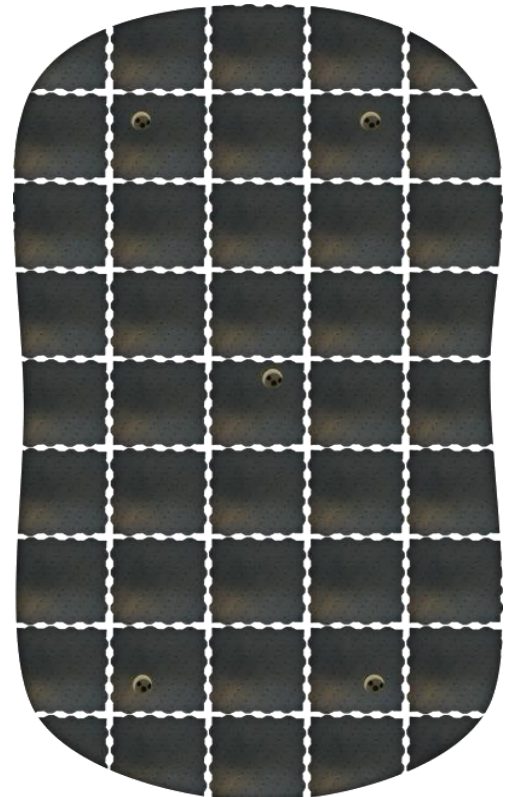
#### 14' x 23' Custom DIY Backyard Putting Green

**During the summer months - please allow 32-35 days from order to ship.**

Shape



Base Layout





## Professional Grade Panelized Putting Greens

### Custom Backyard DIY Putting Green Quote

Customer: **Jordan Spieth**

**COMPLEX SHAPE**  
**Example**

#### Example 2

Custom Price:	<b>\$6,689</b>	Stimp:	10.8
Flat Rate Shipping Promo:	<u>\$299.00</u>	Turf Warranty:	10 yr
Total:	<b>\$6,988</b>	Square Feet:	414 sq ft +/-
Cups and Pins:	5 Included	Chipping Station:	Optional
Seamless Putting Turf:	Yes	RoboCup:	Optional

#### 18' x 23' Custom DIY Backyard Putting Green

Shape

18 x 23

18' 6"

Base Layout

18 x 23

17.33'

23' 6"

22.33'

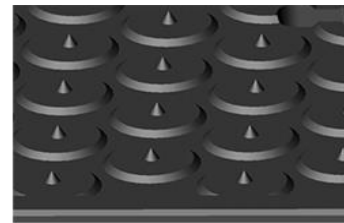


### **UltraBase Systems Pro Panel**

Effective Panel Size:	28" x 28"
Interlock:	Vertical and Horizontal
Drainage:	Vertical and Horizontal
Thickness:	1.25"



***The UltraBase Systems Pro Panel (1.25" thickness)***



***Turf Gripping Bars***



***Perfect Drainage***



**Drainage**

+



**Performance**

+



**Strength**

+

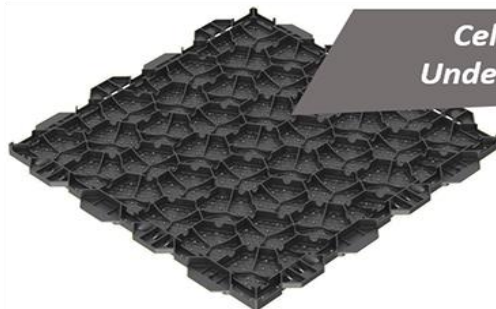


**Cost Effective**

+

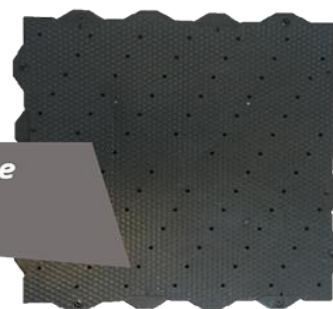


**Easy To Install**



***Cell Structure  
Underside View***

***Barbs and Drainage  
Overhead View***



### **Pro Putt Systems DIY Backyard Putting Green Install**



**TourPutt Ultimate .5"**

**UBS Pro Panel 1.25"**

**Geo Textile Fabric**

**Fine Gravel 2"**

**Natural Current Soil**

**Kit will come with:**

**Pre-cut and labeled base panels**

**Pre-cut putting turf**

**Pre-cut and labeled fringe turf**

**Regulation Cup Assembly**

**Premium Regulation Diameter (4.25") Cup which is 4.5" deep**

**Ground Stabilization (Geo) Fabric**

You can create undulation in your putting surface by "forming" the fine stone dust beneath the panels. The panels will contour to the sub layer you create beneath the Geo Fabric and Base Panels.

If you are not moderately handy and don't have basic yard care tools, you may want to hire a landscaper to install, or bribe a handy friend with the promise of putting practice and a cooler of beer.

**Tools and equipment required (not provided):**

Rake

Shovel

Utility Knife

Tape Measure

Shop Vac

Push Broom

Wheelbarrow

Post Hole Digger

Leaf Blower

Hammer

12" Galvanized Spikes

1.5 Gallon Buckets (1 for each cup location)

Staple Gun

Bag of Drainage Stone

Enough Fine Stone Dust to Cover the Area w 2" Layer





Optional:

Multi Surface Chipping Pad

\$339

\*This is an all weather chipping pad which can be left outdoors year round



Optional:

RoboCup Ball Return

\$50



\*\*ROBOCUP IS NOT WEATHER PROOF

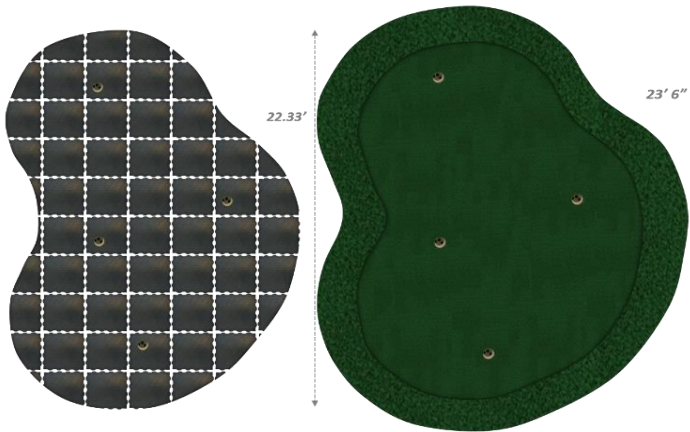




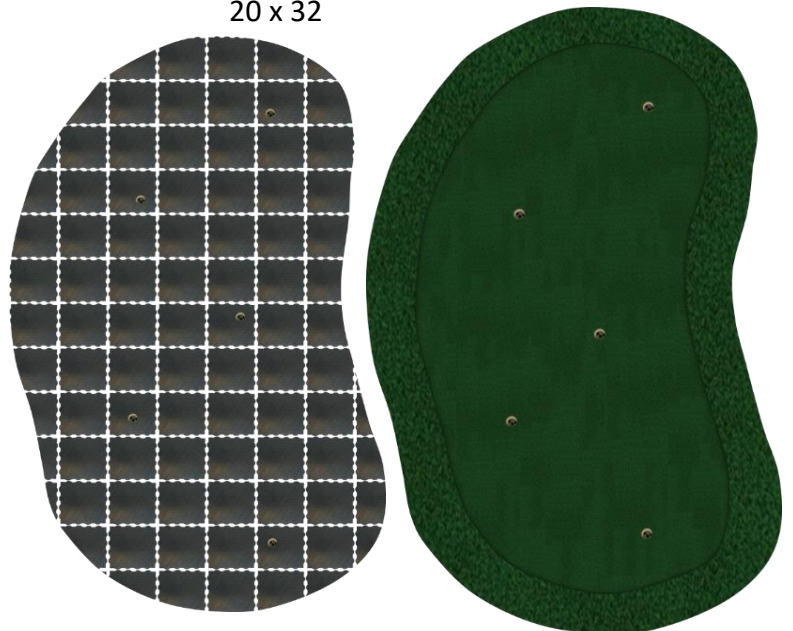




18 x 23



20 x 32



## **Warranty Information:**

TourPutt Ultimate Putting Turf is warrantied for residential use for a period of 10 years

WG4000 Waterless Grass 2" Fringe is warrantied for residential use for a period of 10 years

UBS Pro Panels are warrantied for a period of 20 years under normal US conditions

Regulation Cup Assemblies are warrantied for a period of 5 years

## **Care and Maintenance:**

The best practice is to tarp cover your putting green in the winter time. Not necessarily to protect the putting turf from the elements but to simply keep it clean and free of debris which is common in the winter months.

The turf is rated for use in temperatures ranging from - 30 degrees F to 235 degrees F

If debris or pet waste does get on the green you can simply hose off the green and allow it to dry. You can also literally run a vacuum cleaner over the turf periodically.

If nasty stains do make their way on the green you can use a mix of warm water and dish detergent to remove the stain and then hose off.

A periodic leaf blowing to remove debris from the green is suggested.

The turf does not require any infill and will accept chip shots without a sand or silica infill.

**HIGH EFFICIENCY WINDOWS** - the warranty does not cover melting as a result of "mirror effect" from these types of coated windows. HIGH E windows are designed to reflect sunlight as to not allow UV rays and heat in the building structure. These windows are common in commercial buildings, not in residential buildings.

If you do decide to put lawn furniture on the green, place it in an area where you won't be rolling putts, furniture will leave a mark on the putting surface.

Enjoy your green!



1	2	3	4	5	6	7	8	9	10	11	12	13	14	15	16
---	---	---	---	---	---	---	---	---	----	----	----	----	----	----	----

- 1
- 2
- 3
- 4
- 5
- 6
- 7
- 8
- 9
- 10
- 11
- 12
- 13
- 14
- 15
- 16
- 17
- 18
- 19
- 20
- 21
- 22
- 23
- 24

This image shows a full page of graph paper. It features a uniform grid of thin, light gray lines forming small squares across the entire surface. The background is white, and there are no margins, text, or other markings present.

1 2 3 4 5 6 7 8 9 10 11 12 13 14 15 16 17 18 19 20 21 22 23 24

1  
2  
3  
4  
5  
6  
7  
8  
9  
10  
11  
12  
13  
14  
15  
16  
17  
18  
19  
20  
21  
22  
23  
24  
25  
26  
27  
28  
29  
30  
31  
32  
33  
34  
35  
36

Pro Putt  
Systems





## **Green In A Box Installation Procedure**

### **Recommended Tools**

Sod Cutter, Plate Compactor, Utility Knife, Tape Measure, Marking Paint, Flat Head Shovel, Marking Flags, Landscape Rake, Push Broom, Wheelbarrow, Post Hole Digger, Leaf Blower, Shop Vac, Landscape Pins, 12 inch Galvanized Stakes, Hammer, Drill with  $\frac{3}{4}$  inch bit, Commercial Grade Staple Gun or Pneumatic Staple Gun, Carpet Seam Roller.

### **Additional Materials Needed**

5 Gallon Bucket (one for each hole), Drainage Stone (enough to add 6 inches to the bottom of each 5 gallon bucket), Granite Screenings (enough to make base 2 inches thick), GEO Weed Barrier.

To calculate the amount of screenings needed for your area go to :

<http://www.vulcanmaterials.com/construction-materials/product-calculators/construction-aggregates>

### **Excavation**

Begin by assembling base panels where you would like your green to be installed. Once panels are assembled measure out from edge of base 20 inches and mark out all the way around the base panels. Be sure to mark your cup placement by spraying through holes in base panels. Move panels to the side so you have a clear area to remove earth with sod cutter. Mark cup placements with flags. Set sod cutter to deepest setting. (Should be 2  $\frac{1}{2}$  inches). Run sod cutter along marked edge of putting green area. Remove all earth in marked area down 2  $\frac{1}{2}$  inches. Be sure to leave flags in place that are marking your cup placement.

### **Base Construction**

Place 2 inches (+ or -) of Granite Screenings evenly over the entire base area. Your goal is to add enough base material so that your panel is elevated  $\frac{3}{4}$  inch above the ground level. Rake, water and compact. Create any undulations in your green and water lightly and compact again. Make sure green is sloped slightly to accommodate water run off. Inspect the surface of the base and rake out any bumps. Fill in any voids and compact again. At this point your surface should be smooth and firm.

### **Installing Drainage Buckets**

Drill 10 - 12 drainage holes in the bottom of each 5 gallon bucket using a drill and  $\frac{3}{4}$  inch drill bit. Using a post hole digger or shovel remove base and ground at each cup location to fit the 5 gallon bucket in the ground so that the top edge of the bucket is level with the top of the base. Be careful not to mix dirt in with screenings on base. Fill buckets with drainage stone approximately 6 inches. Smoothe out base back up to

edge of buckets. Make sure base is raked and compacted with undulations located where you would like them.

## Installing Base Panels

Roll out your GEO Weed Barrier making sure that the edges are overlapped and the entire base is covered. Be sure to secure with landscape pins. When placing landscape pins try not to indent base material. Place outside edge base panels in approximate position on top of GEO Barrier and stone base to form shape of putting green. Do not interlock panels leave approximately a 1 - 2 inch gap between panels. Next place center panels in proper position on top of GEO Barrier and stone base. Make sure your cup panels line up over drainage buckets. Once you are happy with placement of base panels begin assembly process. Start at top end of base working from left to right row by row until total base is assembled. If you notice panels are not laying flat over undulations you can use all weather screws to snug panels together. It is important that panels be able to move and flex freely. Insert cups into cup holders and place in opening in cup panel. Make sure cup holder is centered in opening in cup panel. Now that base is assembled and located where you would like, backfill the perimeter edge of base with granite screenings. Screenings should be even with top of base panels and extend outward 20 inches. This will allow 4 inches of fringe to be attached on to the top of the panels and 20 inches to extend out for a total of 2 Ft. If you have wider fringe simply add to the granite screenings around base.

## Roll Out The Putting Green Turf

*Note: There should be a base panel reveal of 4 inches + or - all the way around putting green turf when turf is in proper position.* Place roll of putting turf at one end of base panels. Start with edge of turf 4 inches in from end of base panel. Slowly roll turf out to other end of base. Be careful not to step on inserted cups during this process. If you think a cup insert was shifted peel back turf from one end and adjust cup insert and place turf back down gently. Place fringe (grass) pieces around putting green turf in correct sequence.

**DO NOT FASTEN AT THIS TIME! Let putting green, fringe and base panels acclimate to weather conditions for at least 24 Hours before proceeding to final installation process.**

## Attaching Turf and Fringe

Using a Commercial Grade Staple Gun or Pneumatic Staple Gun fasten putting green turf to base panels every two feet. Roll carpet seam roller over stapled area to help putting green fibers stand up and hide staple. Repeat process for fringe. Be sure to staple seams as well. Finally go around the outside edge of fringe and insert a 12 inch galvanized stake every 2 Ft. Make sure you stake either side of all seams.

## Cutting Cups In

Locate cups on green. It is helpful to place a small stone on top of each cup to mark them temporarily. Do not walk on top of cups to avoid shifting of cup. Using a very sharp blade in a utility knife cut an X in the turf in the middle of each cup. Slowly extend X cut to reach the outside edge of inserted cup. Carefully cut around the outside edge by following the top outside rim of each cup.

## Finishing Touches

Vacuum any remaining debris from your cups. Carefully blow green off with a leaf blower. Use stiff bristle push broom to help fringe fibers stand up. Clean up all trash. Assemble pin assemblies and enjoy your putting green!